



[www.bellflowsystems.co.uk](http://www.bellflowsystems.co.uk)



## MF4000 Series Gas Flow Meters

### The Products

**MF4000 Series mass flow meters** are designed for applications requiring manifold flow. The standard flow rates are 3 mm and 8 mm in diameter, respectively. Plastic finishing with easy change enables applications at a low cost. The meters can be used for environmental samplers and many other industrial applications.

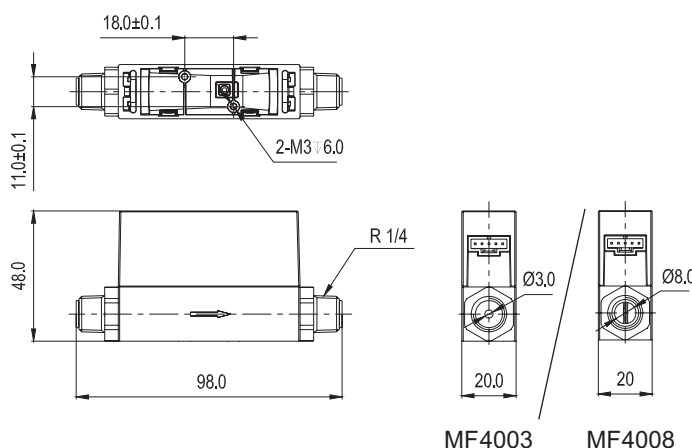
### Features

- Designed for low gas flow, fixed flow of 3 mm and 8 mm, with accumulated flow register
- Compact design ready for manifold assembly
- Fast response time solution of critical applications
- Excellent for manifold process gas monitoring and control
- Exchangeable mechanical connectors for easy installation in different applications

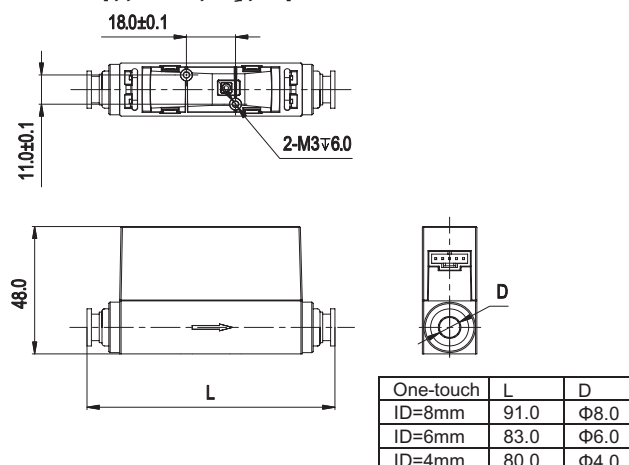


### Mechanical Dimensions

BSPT 1/4 (R 1/4) connection



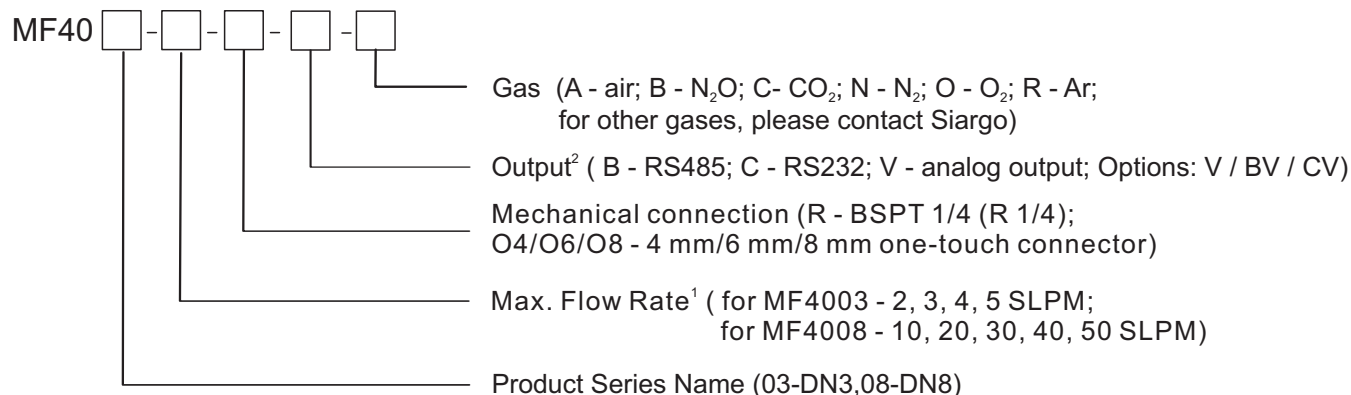
One-touch connection



## Specifications

	MF4003	MF4008	
DN	3	8	mm
Flowrate Range	0 ~ 2, 3, 4, 5	0 ~ 10, 20, 30, 40, 50	SLPM
Turn-down	100:1		
Accuracy	$\pm (1.5 + 0.2 \text{ FS})$		%
Repeatability	0.25		%
Null Shift	$\pm 30$		mV
Output Shift	$\pm 0.12$		% / °C
Response Time	100 (default, 50, 100, 500, 1000 selectable)		msec
Power Supply	8 ~ 18 Vdc, 50 mA		
Output	Analog 0.5 ~ 4.5 Vdc; RS232, RS485		
Display	4 - digit, 7 - segment LED; 2 status LED		
Units	Instant flowrate: SLPM; Flow accumulation: SL		
Display Resolution	0.001, 0.01, 0.1 selectable	0.01, 0.1 selectable	SLPM
Pressure Drop	100	600	Pa
Max. Pressure	0.5		MPa
Working Teperature	-10 ~ +55		°C
Storage Teperature	-20 ~ +65		°C
Humidity	< 95%RH (No icing or condensation)		
Mechanical Connection	BSPT 1/4 (R 1/4), 4 mm / 6 mm / 8 mm One - touch		
Keyboard	3 Keys		
Pins Out	5 Pins, 0.5 m		
Calibration	Air @ 20 °C, 101.325 kPa		
Weight	57(with BSPT 1/4 (R 1/4)) 76(with 4 mm / 8 mm One-touch), 73(with 6 mm One-touch)		g

## Product Selection



1 Only select max. flow rate, for example, 30 meaning max. flow rate of 30 SLPM.

2 The sensor standard output is analog with digital output optional.